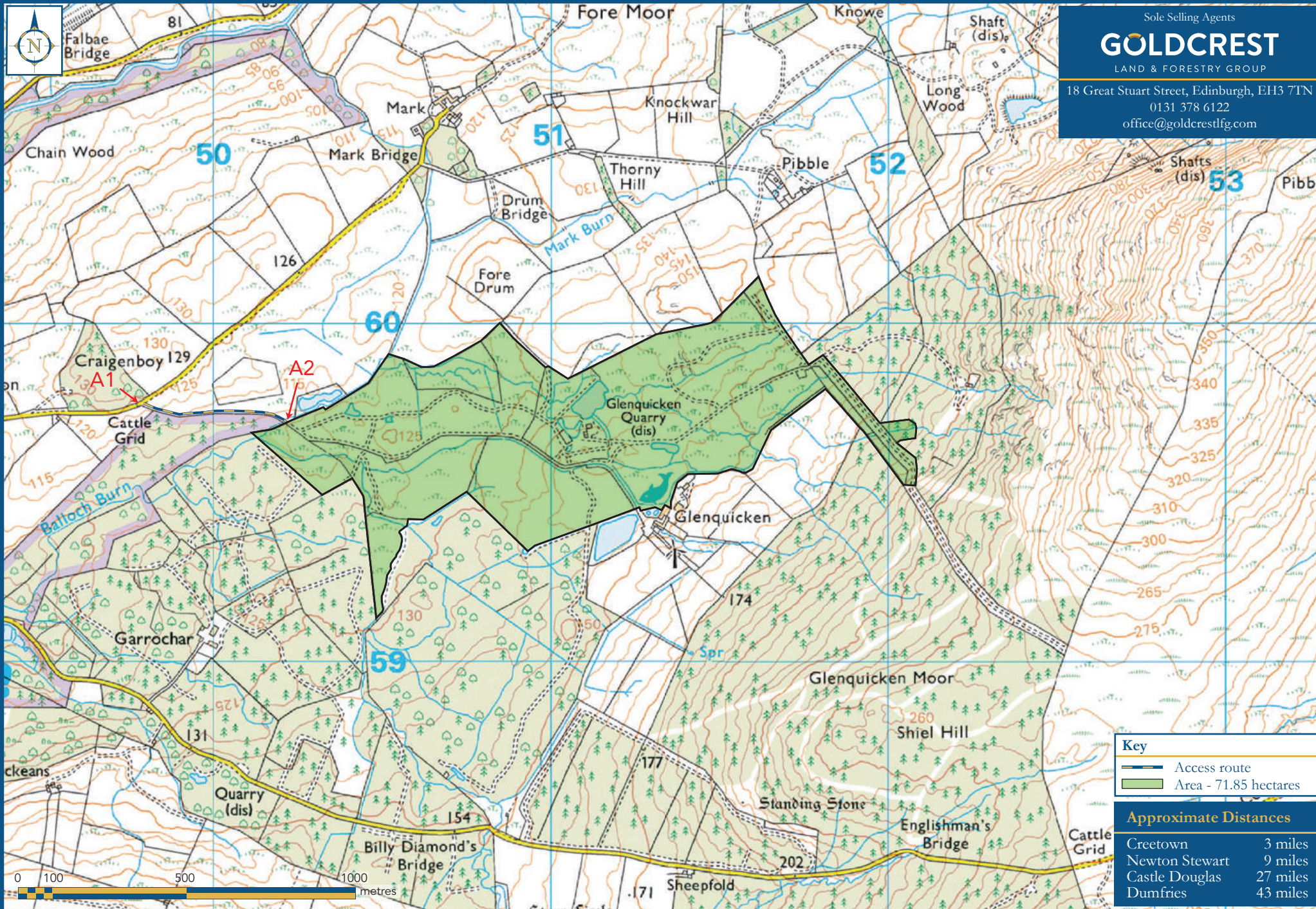


Glenquicken House and Land, Creetown, Newton Stewart, Dumfries & Galloway



Sole Selling Agents
GOLDCREST
 LAND & FORESTRY GROUP
 18 Great Stuart Street, Edinburgh, EH3 7TN
 0131 378 6122
 office@golderestlfg.com

Key

- Access route
- Area - 71.85 hectares

Approximate Distances

Creetown	3 miles
Newton Stewart	9 miles
Castle Douglas	27 miles
Dumfries	43 miles

This plan is only for the guidance of intending purchasers. Although believed to be correct, its accuracy is not guaranteed and it does not form any part of any contract. Reproduced by permission of Ordnance Survey on behalf of The Controller of His Majesty's Stationery Office Crown copyright. All rights reserved. Licence number LIG1383